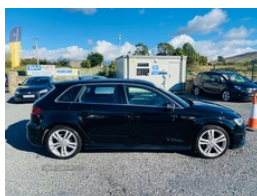


Audi A3 1.6 TDI 110 S Line 5dr [Nav] | Dec 2015
12 MONTHS WARRANTY. LOW RATE FINANCE AVAILABLE

£10,995



****2015 AUDI A3 1.6 TDI S LINE NAV 5 DOOR BLACK****
****105K MILES, FSH, HPI CLEAR, 12 MONTHS WARRANTY**

***** OWN THIS CAR FOR ONLY £144.82 PER MONTH OVER 61 MONTH TERM WITH A DEPOSIT OF £3,995*****

*****ZERO DEPOSIT OPTION IS ALSO AVAILABLE*****
****FINANCE EXAMPLES CAN BE TAILORED TO MEET ANY BUDGET****

****VRT & NOx'S TOTAL IS €2,679**
****ROAD TAX IN ROL IS €190 PER YEAR**

THIS VEHICLE IS FULLY SERVICED AND CHECKED OVER AND COMES WITH 12 MONTHS WARRANTY PACKAGE.

£10,995. stg. TOP RATE GIVEN ON EURO TO STG

CONTACT OUR SALES TEAM
OFFICE - 028 3025 7386
MOBILE - 07746446090
R.O.I SALES - 00353838977356

LATE NIGHT VIEWING AVAILABLE BY APPOINTMENT
ALL MAJOR CREDIT CARDS AND DEBIT CARDS ACCEPTED
CHECK OUT OUR WEBSITE FOR FULL STOCK

SM CARS LTD
272 DUBLIN ROAD
NEWRY
BT358RL

(Please note, every effort has been made to ensure the accuracy of the above information but errors may occur, miles may vary please check with a salesperson)

Vehicle Features

Miles:	105757
Fuel Type:	Diesel
Transmission:	Manual
Colour:	Black
Engine Size:	1598
CO2 Emission:	107
Tax Band:	B (£20 p/a)
Body Style:	Hatchback
Insurance group:	19E
Reg:	FH65LHB

Technical Specs

DIMENSIONS	
Length:	4310mm
Width:	1785mm
Height:	1425mm
Seats:	5
Luggage Capacity (Seats Up):	380L
Gross Weight:	1820KG
Max. Loading Weight:	560KG
Max. Loading Weight:	560KG
PERFORMANCE & ECONOMY	
Fuel Consum. (Urban Cold):	58.9MPG
Fuel Consum. (Extra Urban):	76.3MPG
Fuel Consum. (Combined):	68.9MPG
Fuel Tank Capacity:	50L
Number Of Gears:	6 SPEED
Top Speed:	124MPH
Acceleration 0-100 km/h:	10.7s
Engine Power BHP:	108.6BHP
Engine Power BHP:	108.6BHP

3 adjustable rear headrests, 3 point seatbelts on all seats, 3 spoke flat bottomed S Line multifunction steering wheel, 4 lashing points to secure luggage, 60/40 split folding rear seat, ABS/EBD, Active bonnet, Active front headrests, Adjustable front armrest, Aluminium air vent surrounds, Aluminium door sill trims, Aluminium side window trim, Aluminium trim elements, Anti-theft wheel bolts, ASR, Audi drive select, Audi music interface, Black cloth headlining, Body colour bumpers, Body colour door mirrors with integral indicators, Body colour roof spoiler, Chrome exhaust tailpipes, Coat hooks on both sides, Colour driver's information system display, Cup holders, Curtain airbags, DAB Digital radio, Diesel particulate filter, Door sill trims with S line logo, Driver/Front Passenger airbags, Driver/passenger sunvisors, Driver and passenger side airbags, Driver seat undertray, Drivers knee airbag, Dual zone electronic climate control, EDL, Electro-mechanical PAS, Electromechanical parking brake, ESC - Electronic Stability Control + traction control, Front/rear floor mats, Front and rear electric windows, Front and rear interior lights with delay, Front fog lights, Front passenger airbag deactivation, Heated rear window, Heated windscreen washer jets, Height/depth adjustable steering column, Height adjustable front seats, High gloss black fog light surround, High gloss black front grille, Illuminated glovebox, Illuminated luggage compartment, Isofix attachments on rear seats, Jack and tool kit, LED daytime running lights, LED rear lights, Low washer fluid indicator, Manual rear child locks, Matt brushed aluminium inlays, Perforated leather gearknob, Rear wiper, Remote control central locking, Removable rear parcel shelf, Seatbelt warning, Service interval indicator, S Line body styling, Space saver spare wheel, Speed dependent audio volume control, Storage and luggage pack - A3/RS3, Storage compartment in centre console, Storage compartments in doors, Thatcham category 1 alarm + immobiliser, Tyre pressure monitor, Voice control system, Warning triangle and first aid kit