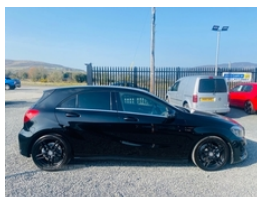


## Mercedes A-Class A180d AMG Line 5dr | Apr 2016

# £12,950

**FSH, SAT/ NAV, PRIVACY GLASS, 2 KEYS, HPI CLEAR**

**SOLD**



**\*\*2016 MERCEDES A180 D AMG LINE 5 DOOR HATCHBACK\*\***

**\*\*105K MILES, FSH, HPI CLEAR, 2 KEYS, 18" AMG ALLOYS, FINISHED IN MERCEDES BLACK METALLIC,**

**\*\*\* OWN THIS CAR FOR ONLY £185.27 PER MONTH OVER**

**61 MONTH TERM WITH A DEPOSIT OF £3,995\*\*\***

**\*\*\*ZERO DEPOSIT OPTION IS ALSO AVAILABLE\*\*\***

**\*\*FINANCE EXAMPLES CAN BE TAILORED TO MEET ANY BUDGET\*\***

**\*\*VRT & NOx'S TOTAL IS €3,135**

**\*\*ROAD TAX IN ROL IS €190 PER YEAR**

**THIS VEHICLE IS FULLY SERVICED AND CHECKED OVER AND COMES WITH 12 MONTHS WARRANTY PACKAGE.**

**£12,950. stg. TOP RATE GIVEN ON EURO TO STG**

**CONTACT OUR SALES TEAM**

**OFFICE - 028 3025 7386**

**MOBILE - 07746446090**

**R.O.I SALES - 00353838977356**

**LATE NIGHT VIEWING AVAILABLE BY APPOINTMENT  
ALL MAJOR CREDIT CARDS AND DEBIT CARDS ACCEPTED  
CHECK OUT OUR WEBSITE FOR FULL STOCK & DETAILS.**

**SM CARS LTD  
272 DUBLIN ROAD  
NEWRY  
BT358RL**

**(Please note, every effort has been made to ensure the accuracy of the above information but errors may occur, miles may vary please check with a salesperson)**

<b>Miles:</b>	105061
<b>Fuel Type:</b>	Diesel
<b>Transmission:</b>	Manual
<b>Colour:</b>	Black
<b>Engine Size:</b>	1461
<b>CO2 Emission:</b>	102
<b>Tax Band:</b>	B (£20 p/a)
<b>Body Style:</b>	Hatchback
<b>Insurance group:</b>	14E
<b>Reg:</b>	BF16NBE

### Technical Specs

#### DIMENSIONS

<b>Length:</b>	4299mm
<b>Width:</b>	1780mm
<b>Height:</b>	1433mm
<b>Seats:</b>	5
<b>Luggage Capacity (Seats Up):</b>	341L
<b>Gross Weight:</b>	1960KG
<b>Max. Loading Weight:</b>	565KG
<b>Max. Loading Weight:</b>	565KG

#### PERFORMANCE & ECONOMY

<b>Fuel Consum. (Urban Cold):</b>	62.8MPG
<b>Fuel Consum. (Extra Urban):</b>	78.5MPG
<b>Fuel Consum. (Combined):</b>	72.4MPG
<b>Fuel Tank Capacity:</b>	50L
<b>Number Of Gears:</b>	6 SPEED
<b>Top Speed:</b>	118MPH
<b>Acceleration 0-100 km/h:</b>	11.3s
<b>Engine Power BHP:</b>	107.3BHP
<b>Engine Power BHP:</b>	107.3BHP

## Vehicle Features

1/3 to 2/3 split folding rear seats, 3 rear 3 point seatbelts, 3 Spoke sports multifunction flat bottomed leather steering wheel, 6 speakers, 8" colour display screen, 12V socket, ABS with Brake Assist, Active bonnet, Adaptive brake lights, Adaptive brake system, Alarm system/interior protection/immobiliser, Ambient lighting, AMG body styling, AMG floor mats with red stitching, Artico man-made leather/Dinamica upholstery, Attention assist, Auto Mercedes-Benz child seat recognition sensor, Black headlining, Bluetooth interface for hands free telephone, Body colour bumpers, Body colour door handles, Body colour side skirt, Brake calipers with Mercedes-Benz lettering + perforated brake discs, Brushed stainless steel sports pedals, Bulb failure indicator, Carbon effect trim, Child proof door locks, Chrome air vent surrounds, Collision prevention assist plus, Comfort, Crash responsive emergency lighting, Daytime running lights, Drivers knee airbag, Dual stage Driver/Passenger Airbags, Dual zone automatic climate control, DYNAMIC SELECT with a choice of driving modes (ECO, Electric adjustable heated door mirrors, Electric front windows, Electric rear windows, Electronic parking brake, ESP with ASR, External temperature gauge, Footwell lights, Front and rear reading lights, Front and rear seatbelt reminder, Front centre armrest with storage compartment, Front head airbags, Front head restraints, Front passenger seat occupancy sensor, Front side airbags, Front sport seats, Headlamp assist, Heated rear window with timer, Height/reach adjustable steering column, Height adjustable front seats, Hill start assist, Illuminated door sills, Illuminated glovebox, Illuminated storage compartment, Isofix rear child seat preparation, Keyless ignition, Leather gearshift, Load securing rings in luggage compartment, Lowered suspension, Low fluid warning light, Luggage compartment cover, Luggage net under rear parcel shelf, Media interface, Mercedes Audio 20 radio/single CD + telephone keypad, Radiator grille with 2 louvres in Silver with chrome trim, Rain sensor windscreen wipers, Rear head restraints, Rear wiper, Remote central locking, Reversing camera, SD card slot, Seat comfort pack - A Class, Service indicator (ASSYST PLUS), Speed sensitive variable PAS, Sport, Sport+ and Individual), Storage compartment under load area floor, Stowage Pack - A Class, Sunvisors with illuminated vanity mirrors, Tirefit sealant with electric air pump, Trip computer, Twin front cupholders, Twin Trapezoidal tailpipes, Tyre pressure monitoring system, USB port, Warning triangle and first aid kit, Window airbags